

Step: Preparation of the support for smooth concrete

Implementation of Prim Epoxy



Prim Epoxy is a 2-component adhesive.



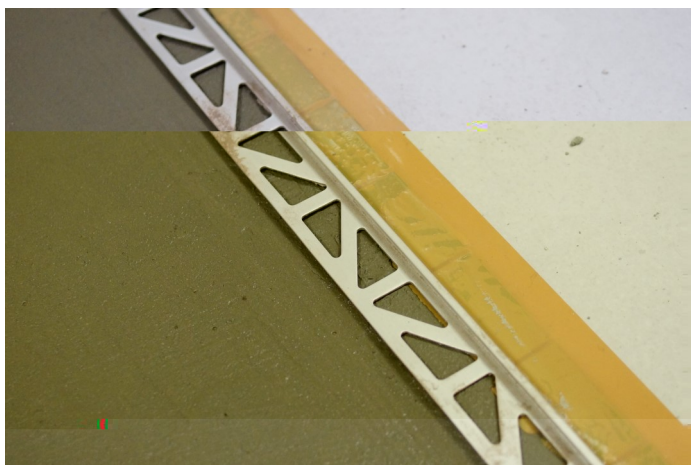
Pour the 2 components A and B in a clean bucket.



Mix at low speed for 2 minutes.



Apply the epoxy resin using a medium pile roller. Work in strip of 1 m not forgetting any part of the tiling.



Don't forget to place if it's necessary stop or expansion joints as needed. Use the epoxy resin to glue them..



Sand refuse helped by Harmony sand as and when.

Step: Preparation of the support for smooth concrete

Implementation of



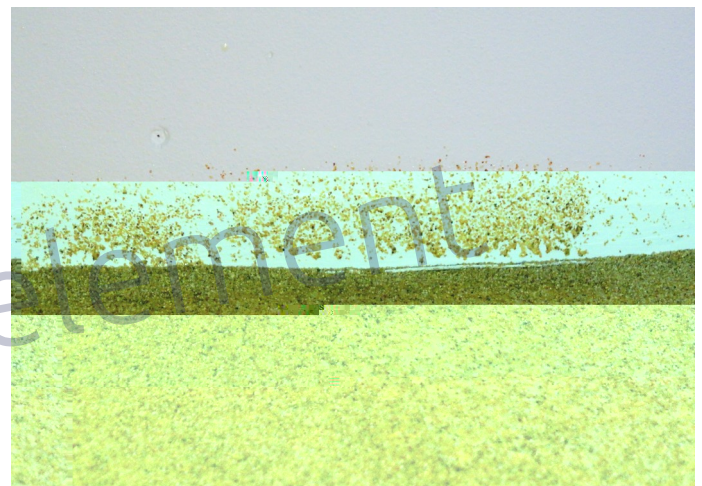
24 hours minimum after, sweep the floor.



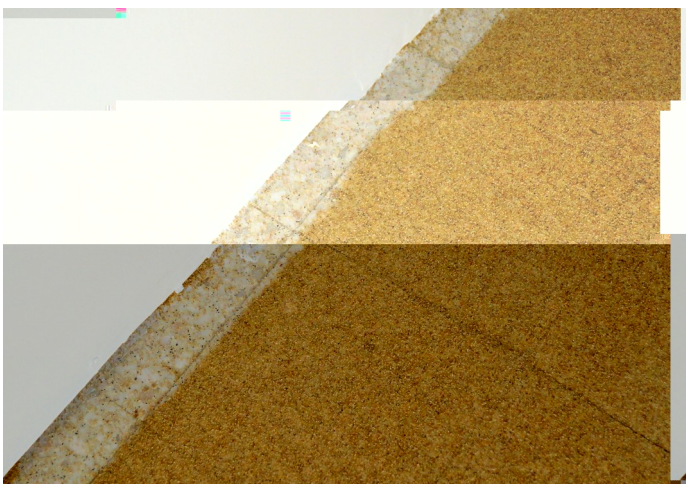
Aspire to finish.



The peripheral strip allows to protect the walls and to separate the wall from the ground.



Be careful of the walls if the peripheral band has not been laid before.



Don't forget to go against the walls with the resin with epoxy.